



# LOCKHART INDEPENDENT SCHOOL DISTRICT (ISD)

## SCHOOL PERFORMANCE REVIEW SUMMARY

### OVERVIEW



#### LOCATION: CALDWELL COUNTY

Lockhart Independent School District (ISD) is located in Lockhart, 30 miles south of Austin.

#### CAMPUSES: 10

The district has 10 instructional campuses, including Lockhart High School, Lockhart Junior High School, Pride High School, Lockhart Discipline Management Center, Carver Early Education Center, Plum Creek Elementary School, Navarro Elementary School, Clear Fork Elementary School, Alma Brewer Strawn Elementary School, and Bluebonnet Elementary School.

#### ENROLLMENT: 5,661

During school year 2016-17, enrollment totaled 5,661 students. The student population was 73.7% Hispanic, 20.7% Caucasian, 3.4% African American, 0.5% Asian and Pacific Islander, and 0.3% American Indian. Approximately 68.2% of students were considered economically disadvantaged (state average being 59.0%), 19.9% were designated as English Language Learners (state average being 18.9%), and 60.7% were identified as at-risk (state average being 50.3%).

### ACCOMPLISHMENTS

- ★ **SCHOOL RESOURCE OFFICERS (SRO)** The SRO program partnership with Lockhart Police Department provides more security and fosters positive relationships between students and law enforcement.
- ★ **DATA-DRIVEN GOVERNANCE** In school year 2016-17, the board participated in a multi-session governance workshop and developed measurable data-driven district goals focused on student outcomes.
- ★ **COMMUNITY SERVICES** The district provides a wide range of community services, including several affordable adult education classes, recreational sports, and child services that are fiscally self-sustaining and often the only resource of their kind available in Lockhart and surrounding areas.
- ★ **INFRASTRUCTURE** Upgrades to the district’s technology infrastructure, facilities and equipment provide a more robust and technology-rich environment for teachers, staff, and students.

### RECOMMENDATIONS

#### SAFETY MANAGEMENT

- Develop formal procedures to guide district safety and **security operations** and document leadership directives
- Revise campus **emergency operations plans (EOPs)** for compliance with statutory requirements and effective coordination with **state and local health departments**
- Strengthen **visitor management controls** to ensure consistency and safety of students and staff districtwide

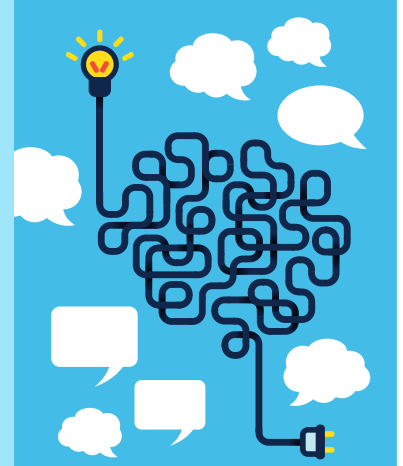




## RECOMMENDATIONS

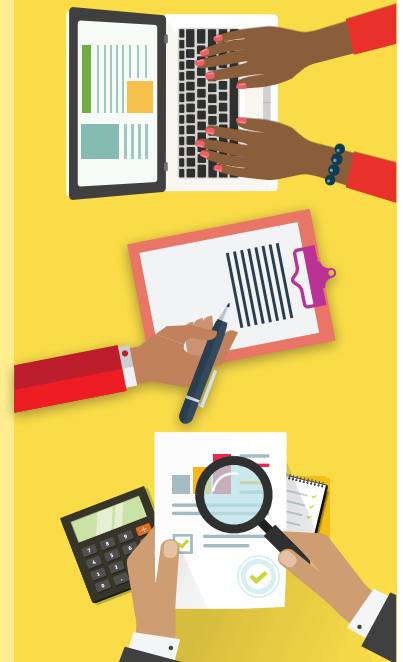
### PERFORMANCE MONITORING & OVERSIGHT

- Develop districtwide **procedures for approving vendor invoices** and communicate procedures to all staff managing contracts
- Amend **transportation management company contract** and develop performance objectives to monitor operational efficiency
- Coordinate with food service management company to ensure teachers **count and claim breakfasts** for accurate reports of reimbursable meals



### PLANNING & PROCEDURES

- Develop 3-5 year plan with measurable objectives to align all areas of **district operations and decision making**
- Establish district goals, expectations, and timelines for **facilities planning**
- Establish comprehensive plan for **replacing buses**
- Develop written procedures to guide **human resources functions**
- Establish a districtwide **response to intervention process** and regularly evaluate student intervention instructional programs for effectiveness
- Develop procedures manual of key responsibilities and functions related to **facilities management, use, and maintenance**



### STAFF MANAGEMENT

- Adopt comprehensive **custodial staffing model, cleanliness standards**, and a system for soliciting stakeholder feedback
- Expand technology coordinator's job description to include director-level duties, and **train all staff on Technology Department structure**
- Implement continuous **evaluation of district's bilingual/ESL program** to ensure staffing, instructional delivery and resources meet the needs of the English Language Learner student population

